



USER MANUAL

A4410 Virtual Unit

How to use it in Demo mode



Content:

- A4410 Virtual Unit..... 3**
 - Installation 3
 - Update 3
 - Operation..... 3
- Live vs. Record 4**
 - Live..... 4
 - Record..... 4
- How to post process (analyze) the Record..... 5**
 - Measurement settings 5
 - Post processing..... 6
- Conclusion 7**

A4410 Virtual Unit

A4410 Virtual unit is the same software used in VA4 Pro vibration analyzer. You can use the Virtual Unit in Demo mode and see the VA4 Pro vibration analyzer working environment. In other words, you can download and install the Virtual Unit free of charge and see all the measurement capabilities of the VA4 Pro vibration analyzer.

The Virtual Unit gives you unique opportunity to find out what the A4400 VA4Pro and A4404 SAB vibration analyzers are able to measure. It could be a huge decision making tool for you before the purchase of one of above mentioned vibration analyzers. Just give it a few minutes to explore it.

Installation

Download the A4410 Virtual Unit from Adash website:

<http://www.adash.com/downloads/adash-software>

Run the A4410 Virtual Unit file and follow the installation wizard process.

Update

To update the software just run the installation file with the newer version. The old version will be replaced. The application data will not be lost.

Operation

The A4410 Virtual unit contains the same functions as the A4400 VA4 Pro vibration analyzer. The only difference is in controlling of the Virtual unit, which is controlled by mouse and keyboard.

Live vs. Record

Run the Virtual unit and click on the *Global* button. You can see various setting items but we are now interested in the *Signal Source* item. Click on it and you have a possibility to select between *Live* and *Default Rec.*

Note: Default Rec. is the name of the Record. See below what Record means.

Live

Live signal means to measure the live signal from the sensor in the real time. It is possible with the Virtual Unit, only if the A4404 SAB device is connected. Without this device it's possible to post process Records only.

Record

Record is the raw time signal from the sensor which has been measured and saved into the memory. This record has not been processed; it is the true time signal as it has been captured from the sensor. A4410 Virtual Unit contains one record (*Default Rec*) for demonstration purposes. You can download more Records from our website:

<http://www.adash.com/downloads/adash-software>

How to post process (analyze) the Signal Record

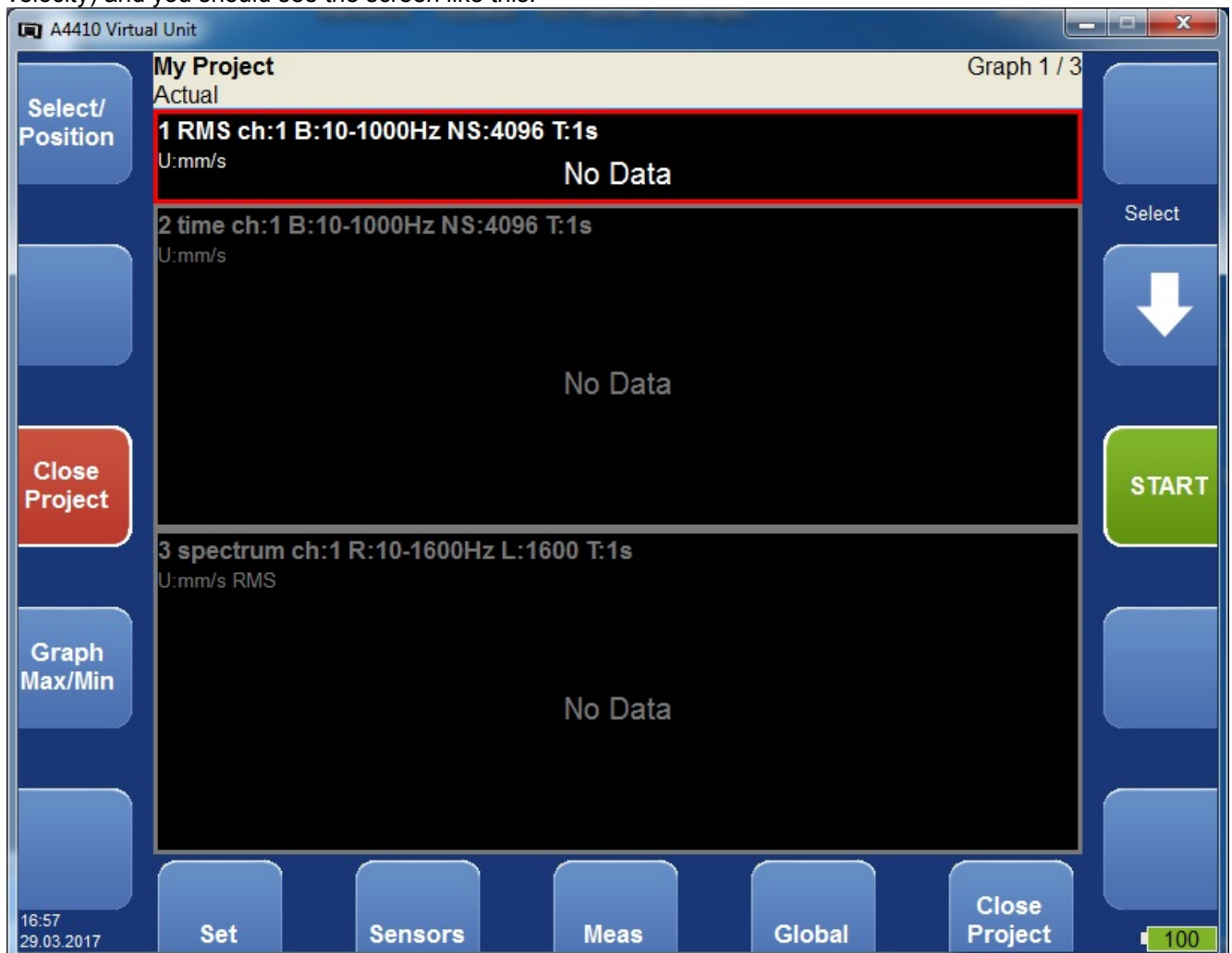
Measurement settings

We will show the Signal Record post processing on the simple example. Let's say we want to get the FFT Spectrum, Time Signal and Overall velocity value from this Record.

Launch the Analyzer mode. Click on the *Project* button, click *New Set*, enter the name of your project and confirm by *OK*. Click *OK* again to go into your Project. Now we are on the screen where we can define measurements mentioned above (FFT Spectrum, Time Signal and Overall velocity).

Click on the *Meas* button (Measurement). There is a possibility to select *New Basic* or *New Advanced* measurement. We will work with *New Basic*. (See the A4400 VA4 Pro manual to understand the difference between *New Basic* and *New Advanced*.) Click on *New Basic* and select *ISO RMS*. You can click on the *Properties* button to check what measurement properties are defined under this *ISO RMS* item. Confirm by *OK* and click *Save*. Repeat the process, but now select *New Basic / ISO Time* and then select *ISO SPECTRUM*.

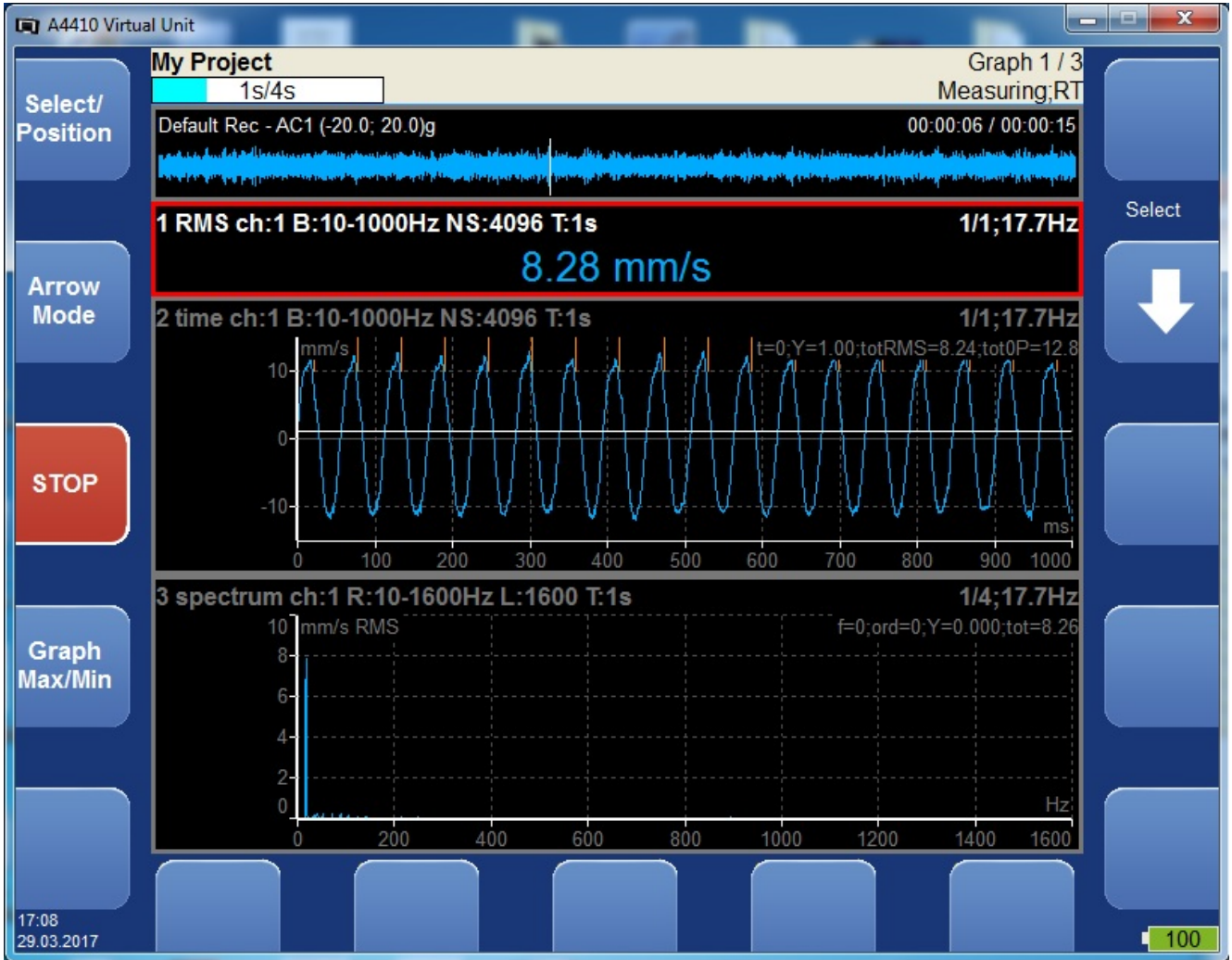
If you followed the process correctly, you defined 3 measurements (FFT Spectrum, Time Signal and Overall velocity) and you should see the screen like this:



Post processing

Measurement setting has been done and now we have to post process (analyze) our Signal Record. Click on the *Global* button and select *Signal Source*, then select the *Default Rec* record and confirm by clicking *OK*. You can see the record preview on the top of the Virtual Unit window.

We are ready to go, press *START* and the record will be post processed. You can observe the screen with measurements. You should see this:



Conclusion

The Virtual Unit gives you unique opportunity to find out what the A4400 VA4Pro and A4404 SAB vibration analyzers are able to measure. It could be a huge decision maker for you before the purchase of one of above mentioned vibration analyzers. Just give it a few minutes to explore it.

Example above was just very basic and easy one. Take a look at the A4400 VA4Pro manual and see what are all the measurement possibilities.

Take a look on the deeper measurement settings (*New Advance*) and try to apply them on the Record.

Try to post process Record in different measurement modes such as Runup, FASIT etc.

Download more Records from our website:

<http://www.adash.com/downloads/adash-software>